

## Features

- Auto Dialer One-touch: up to 40 stations (including program keys)  
Abbreviated: up to 300 stations  
Maximum digits for telephone number: 36
- Program keys (up to 8 Programs)
- Multi-Tasking Operation
- Directory Search Dialing
- Fax Misdial Prevention
- Directory Sheet Print
- Intelligent Redial
- Chain Dialing
- Distinctive Ring Detection (DRD)
- Quick Memory Transmission
- Multi-station Transmission (up to 352 stations)
- Automatic Memory Retransmission
- Deferred Transmission
- Deferred Multi-station Transmission
- Priority Direct Transmission
- Job Build (Max. 255 pages)
- Edit File Mode with View Mode
- Automatic Cover Sheet
- Junk Fax Filter
- Receive to Memory
- Substitute Reception
- Selective Reception
- Number of memory job files (Max. 50 files)
- Fax Forward
- Polling/Multi-station Polling (up to 352 stations)
- Deferred Polling/Deferred Multi-Station Polling
- Confidential Mail Box \*\* (10 mail boxes)
- Password Transmission/Reception \*\*
- ITU-T Sub-address Transmission
- Panasonic Super Smoothing (Fax/Copy)
- 64-Level Halftone
- Automatic/Fixed Reduction
- Overlapping Print
- Collation Stack
- Verification Stamp
- Communication Journal with image data
- Header/Total Page Print
- Transaction Journal with view mode
- Fax Access Code (Fax Lock)
- PIN Code Access
- Fax/Tel Auto Switch
- External TAM Interface
- Remote Reception
- LCD Display with Backlight (20 x 2 lines)
- Energy Saver
- Remote Diagnostics System (G3/Email)
- Check & Call Function (G3/Email)
- LDAP 2 Compatible
- SMTP Authentication
- APOP
- POP before SMTP

### Standard Software

- Printer Driver
- Twain Scanner Driver
- PC-Fax software (Fax Driver/Panafax Desktop)
- Quick Image Navigator
- Phone Book Editor
- Configuration Editor
- Status Monitor



Handset Kit  
UE-403186



## Options

- Internet Fax Module (UE-404094)
- 250-sheet 2nd Paper Feed Module (UE-409090)
- Handset Kit (UE-403186)

## Consumables

- All-In-One Print Cartridge (UG-5580)  
(Approx. 9,000 pages \*10)

## UF-6200 Specifications

Compatibility	ITU-T Group 3, ECM	
Modem Speed	33.6 kbps - 2.4 kbps with automatic fallback	
Coding Scheme	MH/MR/MMR	
Transmission Speed**	Approx. 3 sec.	
Document Size	Max.	10.1" x 78.7" (257 mm x 2000 mm) (with operator's assistance)
	Min.	5.8" x 5.0" (148 mm x 128 mm)
Effective Scanning Width	8.3" (212 mm)	
Automatic Document Feeder Capacity**	Up to 50 sheets (Letter)	
Scanning Resolution (Fax)	Standard:	203 dots/inch x 98 lines/inch (8 dots/mm x 3.85 lines/mm)
	Fine:	203 dots/inch x 196 lines/inch (8 dots/mm x 7.7 lines/mm)
	Super Fine:	203 dots/inch x 391 lines/inch (8 dots/mm x 15.4 lines/mm)
		406 dots/inch x 391 lines/inch* (16 dots/mm x 15.4 lines/mm)
Scanning Speed**	Approx. 2.8 sec. (Letter, Standard mode)	
Recording Method	Laser printing on plain paper	
Recording Paper Size	Letter / Legal / A4, cut-sheet on plain paper	
Effective Recording Width	8.2" (208 mm) (Letter)	
Recording Paper Capacity	250 sheets (20 lb., 75 g/m <sup>2</sup> ), Max. 500 sheets with optional Paper Feed Unit	
Recording Resolution	Fax / Copy	406 dpi x 391 dpi
	Printer	600 dpi x 600 dpi
Image Memory Capacity**	8 MB (Approx. 480 pages)	
Printer / Scanner Interface	USB 1.1	
Scanner Driver	TWAIN	
Scanning Resolution (PC)**	400 dpi x 400 dpi	
Power Requirements	AC 120 V, 60 Hz	
Power Consumption	Max.	Approx. 470 W
	Sleep mode:	1.2 W
Dimensions (W x D x H)**	14.6" x 18.7" x 9.9" (370 mm x 474 mm x 253 mm)	
Weight**	20 lb. (9.0 kg) (Excluding consumables and optional equipment)	

### Note

- \*1 Panafax proprietary features work only with selected Panafax machines.
- \*2 Transmission time applies to memory transmission of text data using only ITU-T Image No. 1 between the same models at maximum modem speed. Transmission time may vary in actual usage. Usually public telephone lines can only support communications speeds of 28.8 kbps or lower. Via PBX, transmission speed may fall back to a lower speed.
- \*3 Using 16lb, 60g/2 sheet. Set the documents as stairs shape.
- \*4 Interpolated resolution (Optical Resolution: 203 dots/inch x 391 lines/inch)
- \*5 Scanning speed applies to the feeding process from the top to the end of a single page test chart. The time for the feeding process does not include the time that it takes for the top edge of the page to reach the scanning point and page ejection. Time for entire storing process is not applied.
- \*6 Speeds are contingent upon applications, machine configuration, and status. Individual speeds may vary.
- \*7 In multiple copy mode excluding the first copy.
- \*8 Based on ITU-T Image No. 1 scanned in Standard mode.
- \*9 Dimensions and weight are approximate.
- \*10 Based on ITU-T Image No. 1 scanned in multiple copy mode.  
Yield may vary according to operating conditions and environment where the machine is installed.

Microsoft® and Windows® are registered trademarks of Microsoft Corporation.  
All other brand or product names are the property of their respective holders.  
Design and specifications are subject to change without notice.

### Dimensions\*\*



# merit

## Plain Paper Laser Fax



## UF-6200

UF-6200

# Panasonic®

Panasonic Communications Company of North America  
One Panasonic Way, Secaucus, NJ 07094  
For a local dealer, please call 1-800-742-8086  
panasonic.com/office



As an Energy Star® Partner, Panasonic has determined that this product meets the Energy Star® Guidelines for energy efficiency.



ISO 9001  
Quality Management System

Our business processes which produce document, information and network products, from manufacturing to marketing, conform to ISO9001 Quality Management Systems standard. Design, development, manufacture, installation, repair and maintenance of document, information and network products, their associated devices and consumables. In addition, the plants outside Japan have acquired ISO9001 certification.

UF-6200BR1108

# Panasonic ideas for life

# Power faxing at your fingertips

## SEND with speed and confidence

### High-speed and Reliable Scanning

Built for true business-level faxing, the UF-6200 is equipped with a 50-page automatic document feeder which can quickly scan documents at a rate of 2.8 seconds per page. With a touch of a button, multi-page documents are on their way and you are free to tackle more important tasks!

### 480-page Capacity Document Memory

With its high-capacity 8MB document memory, the UF-6200 can store up to 480 pages\*. That's more than enough memory to easily handle several high-volume jobs at once. No wasted downtime!

\*1 Based on ITU-T Image No.1 scanned in standard mode.

### Job Build

When a large job exceeds the ADF capacity, the UF-6200 lets you batch feed the job into memory. After which the job is assembled into a single transmission. Just one of the many convenient features designed to handle large jobs and save valuable time!

### Super Fast Fax Transmission



With Quick Memory Transmission, the UF-6200 starts dialing as soon as the first page is scanned in. Another time-saving feature for sending large, multi-page documents!

### Fax Driver for Easy PC Faxing



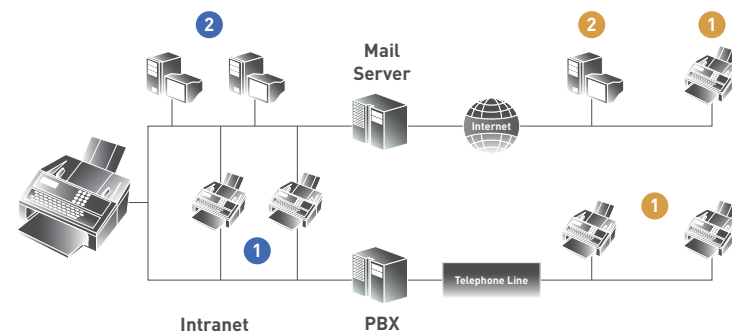
PC Faxing saves both time and paper. With the Fax Driver that comes standard with the UF-6200, sending faxes from your desktop is as simple as selecting the driver and inputting the destination fax number.

No need to print the document or walk over to the fax machine!

### Email/G3 Fax Hybrid Solution\*2

Add the optional Internet Fax Module and the UF-6200 transforms into a hybrid solution. Simultaneously send G3 faxes using a phone line while sending or receiving internet faxes from the internet, increasing your office productivity.

\*2 Requires optional Internet Fax Module



- 1 I-Fax / G3 Fax machines on LAN
- 2 PC on LAN
- 1 I-Fax / G3 Fax machines
- 2 PC

## RECEIVE with interruption-free convenience

### 250-sheet Capacity Tray (Max. 500 sheets with option)

With 250 sheets of paper in the standard tray, the UF-6200 is always ready to receive large volumes of faxes. If that is not enough, you can add an optional tray for a maximum capacity of 500 sheets!

### 100-sheet Reception Tray

The reception tray holds up to 100 pages. No worries about large jobs overflowing the tray. Just pick up your faxes when you are ready!

### High Capacity All-in-One Cartridge

Running out of toner in the middle of receiving a fax is annoying. The All-in-One cartridge with a print capacity up to 9,000 pages\*3 means less frequent replacement, simple changing, and one less worry!

\*3 Based on ITU-T Image No.1 scanned in multiple copy mode. Yield may vary according to operating conditions and environment where the machine is installed.

### Junk Fax Filter

Block junk faxes by registering unwanted fax numbers. It's a great way to prevent wasted paper, toner and valuable time on junk faxes. Blocked fax numbers can be confirmed in the fax communication log.

## OPERATE intuitively

### Ergonomically Designed Panel



The UF-6200 features an ergonomically designed operation panel. All the hard keys are laid out logically and labeled clearly for stress-free operation. Status

indicator lets you know at a glance when the machine is in use or requires attention.

### 340-Station Auto Dialer

Frequently used fax numbers can be programmed into any of the 40 one-touch or 300 abbreviated buttons in memory for easy mistake-free faxing.

### Directory Search with the QWERTY keyboard

Inputting directory information is easy with the familiar QWERTY keyboard. The large keys also make directory searching simple. Just input the first few letters and it will list matching names on the LCD. Use the up and down keys to navigate the list and select the name you are looking for.

### Backlit LCD

The UF-6200 features easy-to-read backlit LCD for a clear display of information.

## SECURITY for information integrity

The UF-6200 comes equipped with advanced fax transmission security. Three levels of protection prevent you from accidentally sending faxes to the wrong party.

### 1. Direct Dial "Re-Entry"

When enabled, you are asked to re-enter the fax number or Email address twice before the machine starts sending the fax.

### 2. Direct Dial "Blocking"

The UF-6200 can be set to prevent all direct dialing. You can only send faxes to phone numbers listed in the machines address book.

### 3. On-Screen Address Confirmation

In this mode, the UF-6200 displays the registered name of the recipient on the display, allowing you to make sure that the fax is transmitted to the intended party.

## Built-in maintenance and support



Keep your work flowing with maintenance support features like Check & Call for automatic reporting of low-toner status and mechanical problems. Additionally the UF-6200 features a built in Remote Diagnostic System for fast troubleshooting by technicians via the telephone line or Internet.



RELIABLE ADF  
WITH JOB BUILD



250 SHEET STANDARD  
500 SHEET MAX  
PAPER TRAY CAPACITY



2.8 SECONDS  
QUICKSCAN

